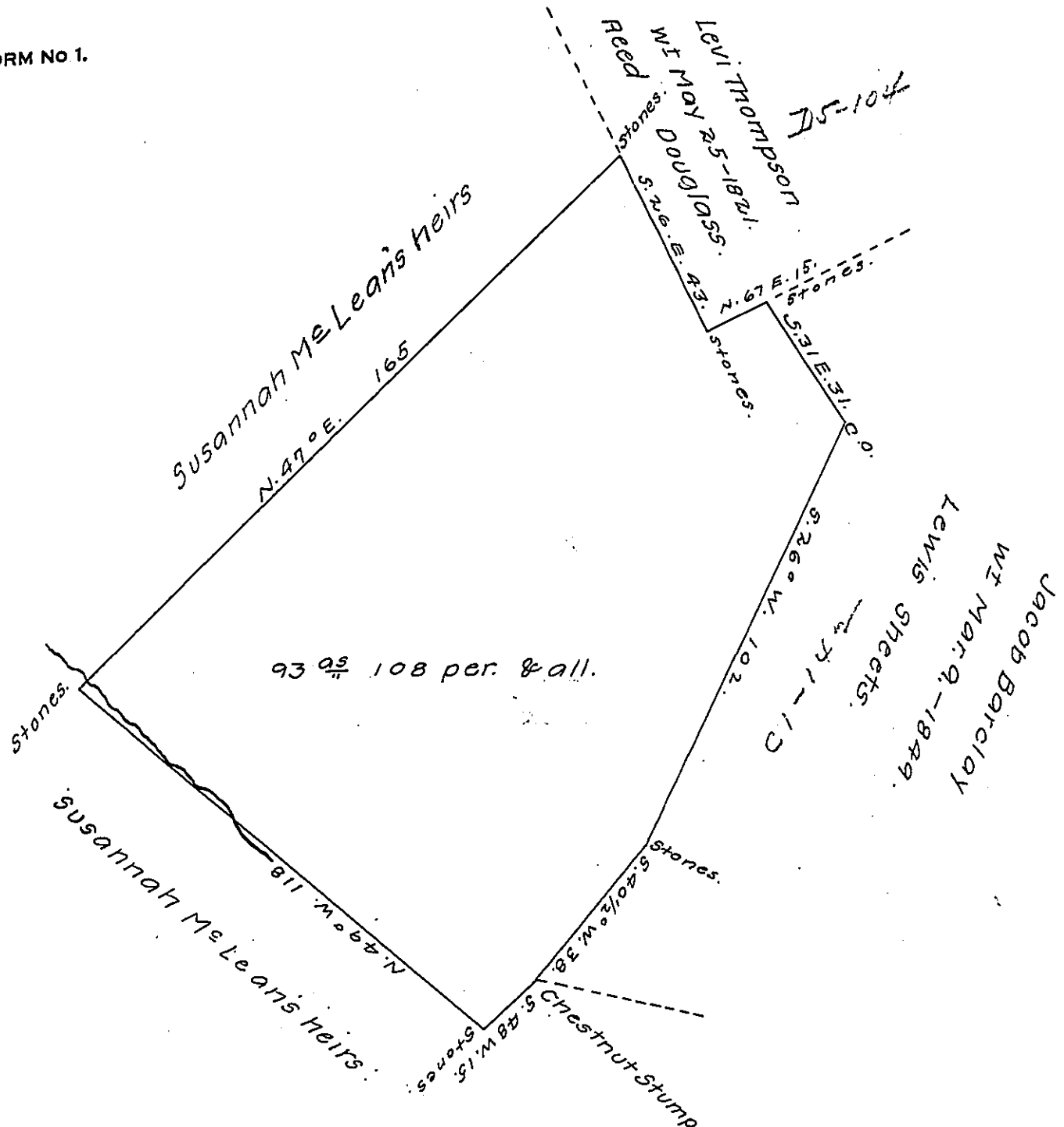


FORM NO 1.



A Draft of a tract of land situated in the Township of Donegal and County of Westmoreland, containing 93 acres, ~~108~~ 108 perches and allowance of six percent for roads, etc. surveyed the 9th day of December, 1902, in pursuance of a warrant granted to J.W. Weaver, in trust for the heirs of Susannah McLean, dated the 26th day of Nov., 1902.

W. H. Matthews,
 County Surveyor.
 To James W. Latta, Esq.,
 Secretary of Internal Affairs.

IN TESTIMONY that the above is a copy of the original remaining on file in the Department of Internal Affairs of Pennsylvania, made conformably to an Act of Assembly approved the 16th day of February, 1833, I have hereunto set my Hand and caused the Seal of said Department to be affixed at Harrisburg, this fifth day of August, 1907.

Henry Howell
 Secretary of Internal Affairs.